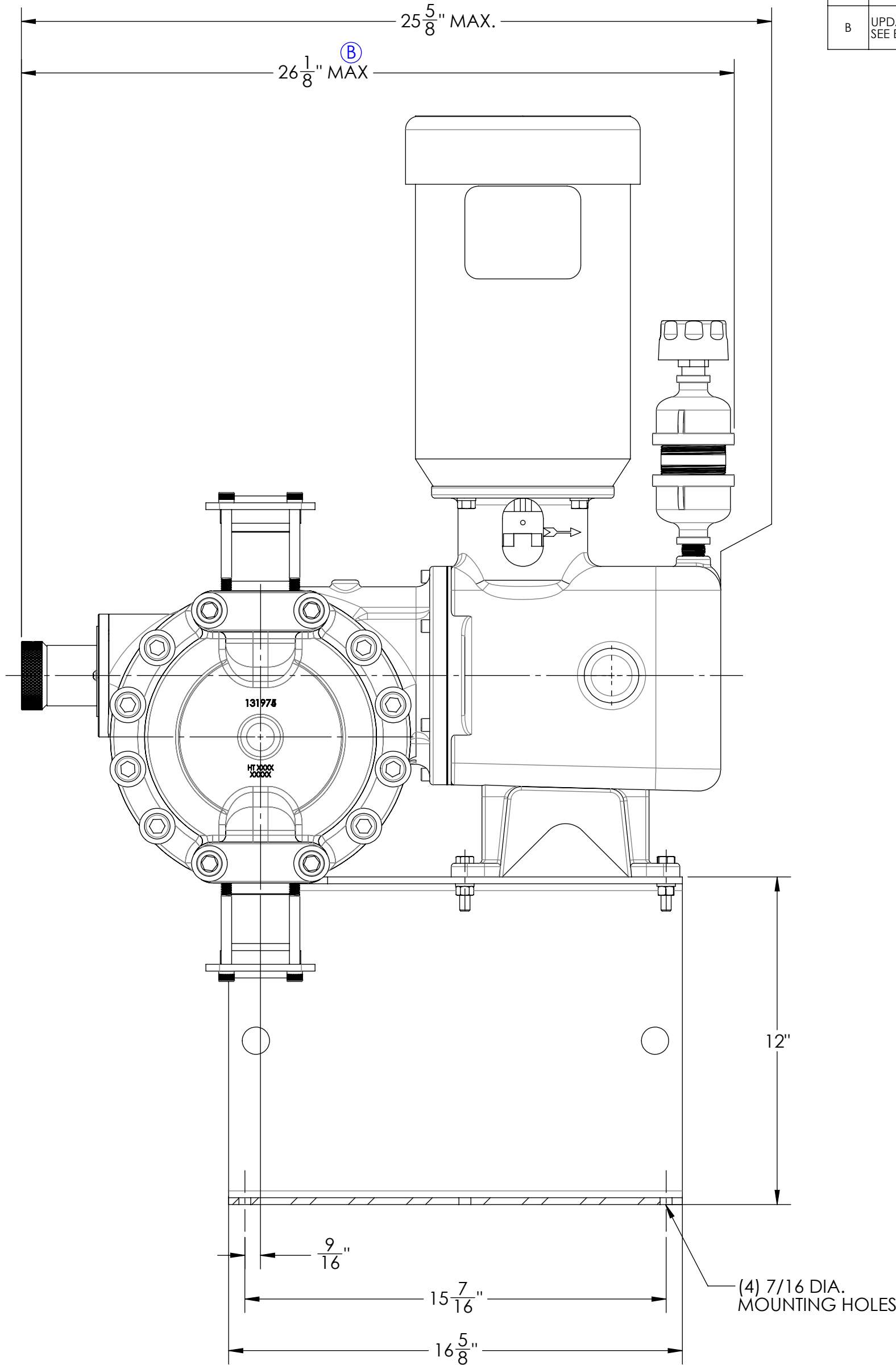
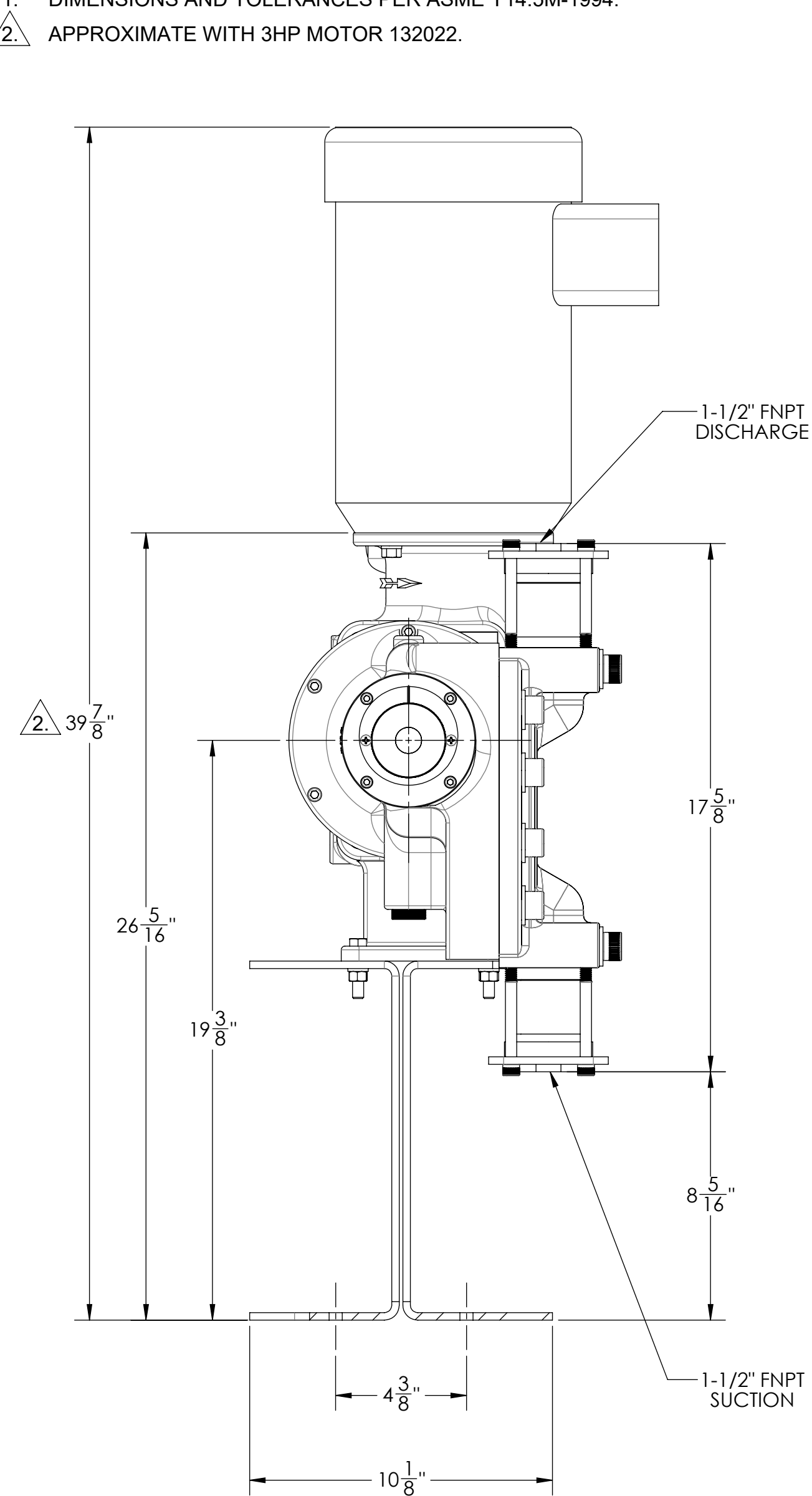


- NOTES: UNLESS OTHERWISE SPECIFIED
1. DIMENSIONS AND TOLERANCES PER ASME Y14.5M-1994.
2. APPROXIMATE WITH 3HP MOTOR 132022.



MODEL 657/658/667/668 (316SS & C-20 HEADS)

REV	DESCRIPTION	BY	CHK	APP	DATE
A	RELEASED INTO PRODUCTION SEE ECN #GRT002398	-	-	-	-
B	UPDATED OIL TRAP AND CAP SEE ECN #GRT002442	CJL	JMN	KT	08/09/24

THIS DOCUMENT CONTAINS PROPRIETARY INFORMATION OF PSG - A DOVER COMPANY. ITS RECEIPT AND POSSESSION DO NOT CONVEY ANY RIGHTS TO REPRODUCE OR DISCLOSE ITS CONTENTS OR TO MANUFACTURE USE OR SELL ANYTHING IT MAY DESCRIBE. THIS DOCUMENT IS SUBJECT TO RETURN UPON REQUEST. REPRODUCTION, DISCLOSURE OR USE OF THIS DOCUMENT WITHOUT THE WRITTEN AUTHORIZATION OF DOVER CORPORATION IS STRICTLY FORBIDDEN.		DO NOT SCALE DRAWING UNLESS OTHERWISE SPECIFIED DIMENSIONS ARE IN INCHES TOLERANCES ARE: DECIMALS .XX ± - .XXX ± - ANGLES ± -		22069 VAN BUREN STREET GRAND TERRACE, CA 92313-5651 USA (909) 422-1700 PSGDOVER.COM/NEPTUNE	
THIRD ANGLE PROJECTION		DRAWN BY CJL		DATE 06-06-2024	
		CHECKED BY RB		DATE 06-07-2024	
		APPROVED BY KT		DATE 06-06-2024	
TITLE DIMENSIONAL ASSEMBLY, METAL 650/660 SERIES		SIZE C	DRAWING NO. LN0008		REV. B
SCALE 1:4		SHEET 1 OF 1		REVISED 10-30-23	